



Destinataskool
Destinata School



EKSAMINATOR/ EXAMINER: F. MARK
MODERATOR: J. NAUDE

GR 10

Memorandum

INGENIEURSGRAFIKA EN –ONTWERP V2
ENGINEERING GRAPHICS AND DESIGN P2

Totaal/ Total: 120

Tyd/ Time: 2 ure/hrs

INSTRUKSIES EN INLIGTING

- Beantwoord ALLE vrae.
- Alle tekenne moet volgens skaal 1:1 gemaak word, tensy anders vermeld.
- Alle vrae moet op die gegewe antwoordvulle beantwoord word.
- Alle antwoordvulle moet weer in nommervolgorde vasgekramp en ingelewer word, ongeag of die vraag beantwoord is of nie.
- Sorgvuldige tydsebegplanning is nodig om alle vrae te beantwoord.
- Drukskrif jou naam in die blokkie voorsien op elke antwoordvel.
- Alle antwoorde moet akkuraat en netjies gedoen word.
- Besonderhede of afmetings wat uitgelaat is moet in goeie verhouding beraam word.

INSTRUCTIONS AND INFORMATION

- Answer ALL the questions.
- All drawings must be drawn to scale 1:1, unless otherwise stated.
- The questions must be answered on the answer sheets provided.
- All the answer sheets must be re-stapled in numerical sequence and handed in irrespective of whether the question was attempted or not.
- Careful time management is essential in order to complete all the questions.
- Print your name in the block provided on every answer sheet.
- All answers must be drawn accurately and neatly.
- Any details or dimensions not given must be assumed in good proportion.

Punt/Mark	
-----------	--

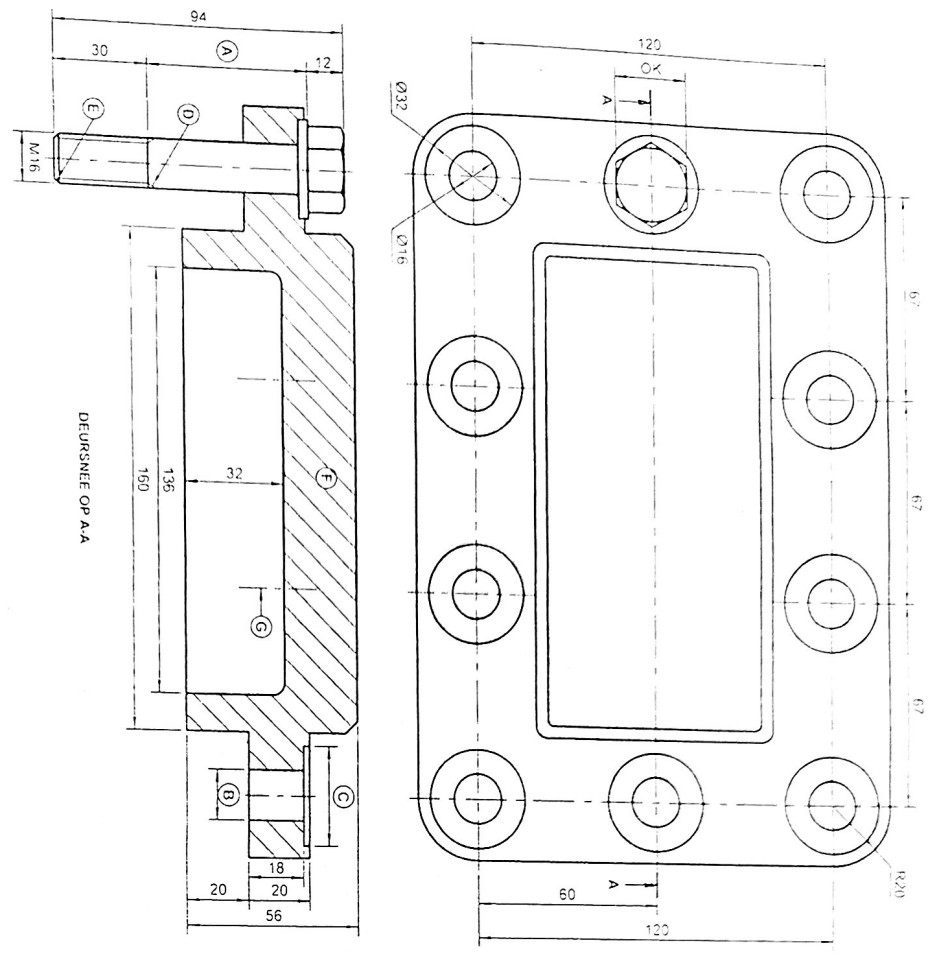
VOLTOOI / COMPLETE	
NAAM	
NAME	
DATUM	
DATE	

Vraag 1 - Meganiese analities

Gegee:
Twee afdruigte van 'n MONTEERPLAAT met 'n tusselblik en 'n tabel met vrae.

Instrukties:
Voltooi die tabel hieronder deur die vrae, wat almal na die bygevoegde tekening en tusselblik verwys, nagesig te beantwoord

[20]



VRAE	ANTWOORDE	
1. Wie het die tekening nagegaan?	HENDRIK	1
2. Op watter datum is die tekening goedgekeur?	13/12/14	1
3. Wat is die tekening nommer?	3 Prod - AM/2	1
4. Watter ROT-stelsel is gebruik om die tekening te produseer?	Tubocad Pro V18	1
5. Van watter materiaal moet die monterplaat vervaardig word?	GIET YSTER	1
6. Watter ortografiese projeksietegniek is vir die tekening gebruik?	3 ^{de} Hoeks	1
7. Hoeveel M-16 boute word benodig om die monterplaat te bevestig?	10	1
8. Bepaal die afmetings by:	A 52 B 110 C 232	3
9. Bepaal die hoekgroottes by:	D 60° E 45°	2
10. Benoem die kenmerke by:	F ARSENING G SENTRELIJN	2
11. Hoeveel keer is die tekening hersien?	4	1
12. Wat is die skaal wat vir die tekening aangestel word?	1:2	1
13. Teken, in die blok hieronder, in reëlise vryhand, die simbool vir die projeksietegniek wat gebruik is.		4
TOTAAL		20

-1 IN PEN

04/12/14	GERT	VERANDER MASJINERING SPES	2
07/12/14	ANDRE	ARSENINGBESONDERHEDE	1
DATA	VERANDER DEUR	BEKRYWING VAN HERSIENING	Nr.

MONTEERPLAAT

MATERIAAL	GIET YSTER
TEKENPROGRAM	Tubocad Pro V18
TEKENING Nr.	JProd - AM/2
LEERNAMM	AM 2-2014



ISO
INGENIEURSGESKAP
(SA) (Eng) Bpk
SCHIEMANSSTRAAT 207
PRETORIA
0001
www.igingenieurs.co.za
012 777 1717

TEKENAAR	ANEMIE	07/12/14
NASIENER	HENDRIK	10/12/14
GOEDGEKEUR	JOHAN	13/12/14
SKAAL	1:2	

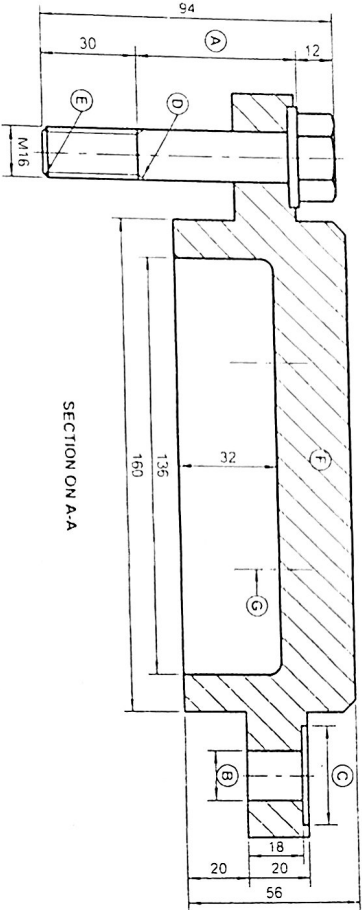
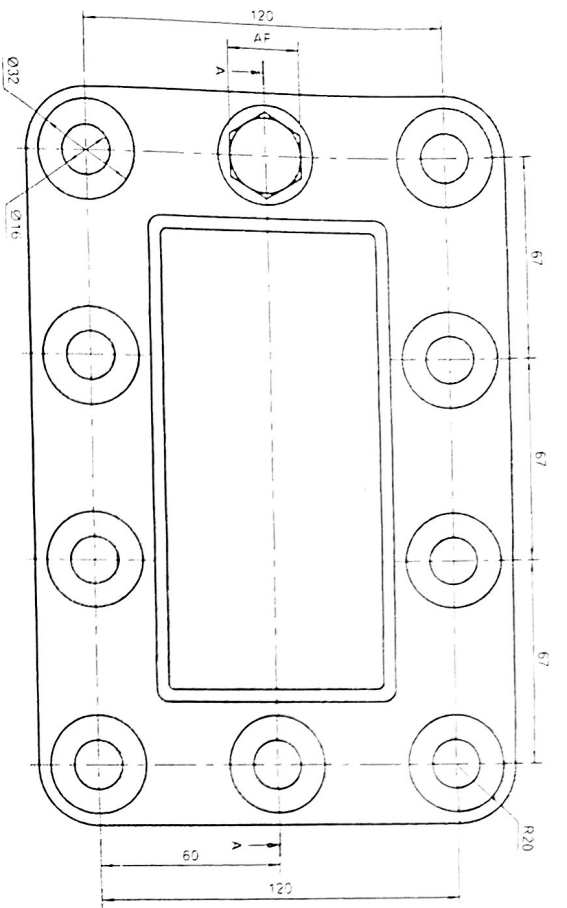


Question 1- Mechanical analytical

Given:
Two views of a MOUNTING PLATE, a title block and a table of questions

Instructions:
Complete the table below by answering the questions, which all refer to the accompanying drawing

[20]



QUESTIONS	ANSWERS	
1 Who checked the drawing?	HENDRIK	1
2 On what date was the drawing approved?	13/12/14	1
3 What is the drawing number?	JPredd - Am1/2	1
4 What CAD drawing system was used?	TURBOCAD Pro V18	1
5 Which material is the mounting plate made of?	CAST IRON	1
6 Which orthographic projection system has been used?	1st ANGLE	1
7 How many M16 bolts must be used to secure the mounting plate?	10	1
8 Determine the dimensions at A	52	B
9 Determine the angle size at D	60°	E
10 Label the features at F	HATCHING	G
11 How many lines has the drawing been revised?	4	CENTER LINE
12 What scale is indicated for the drawing?	1:2	✓
13 In the box below, draw, in neat freehand, the symbol for the projection system used.		4
TOTAL		20

-1 IN PEN.

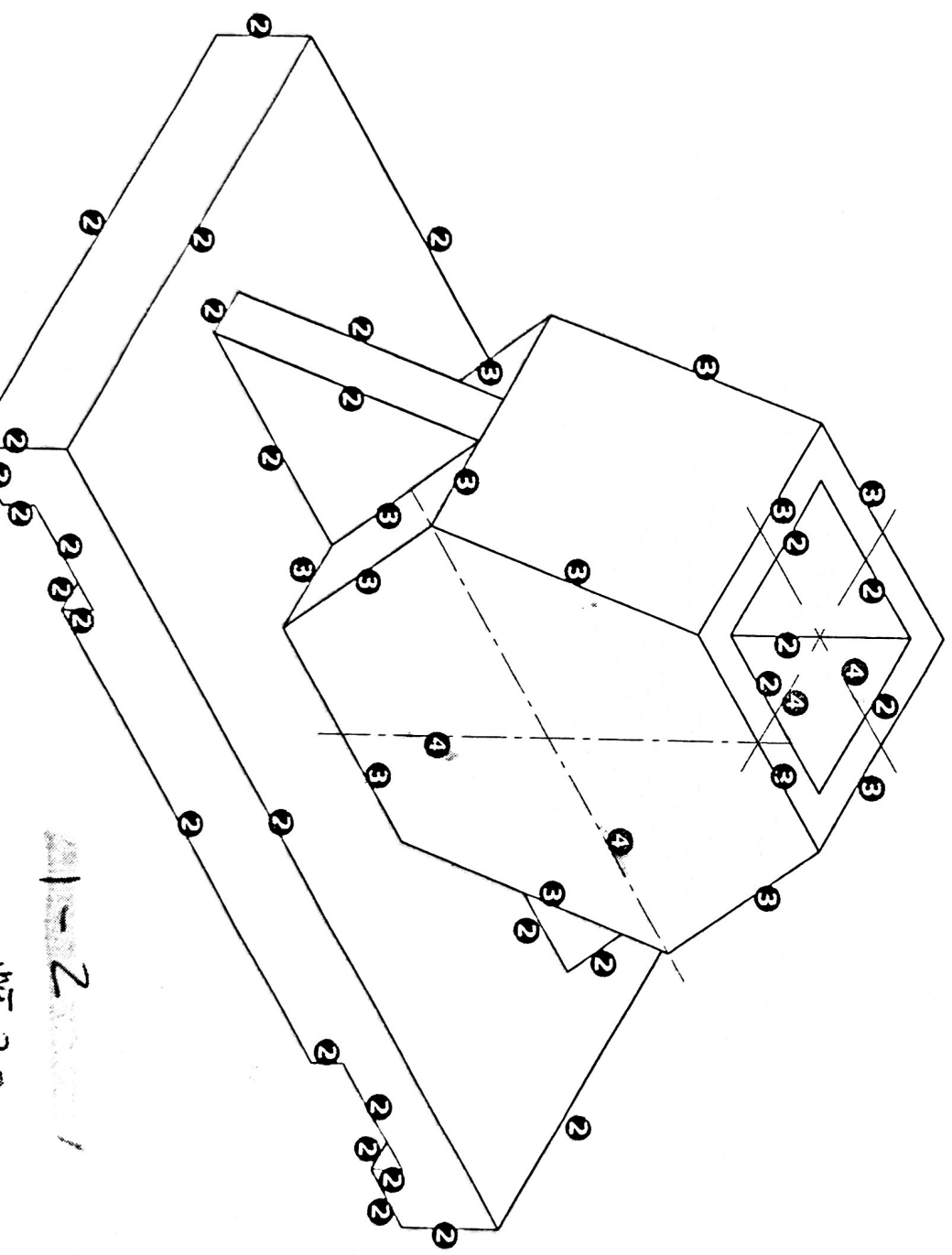
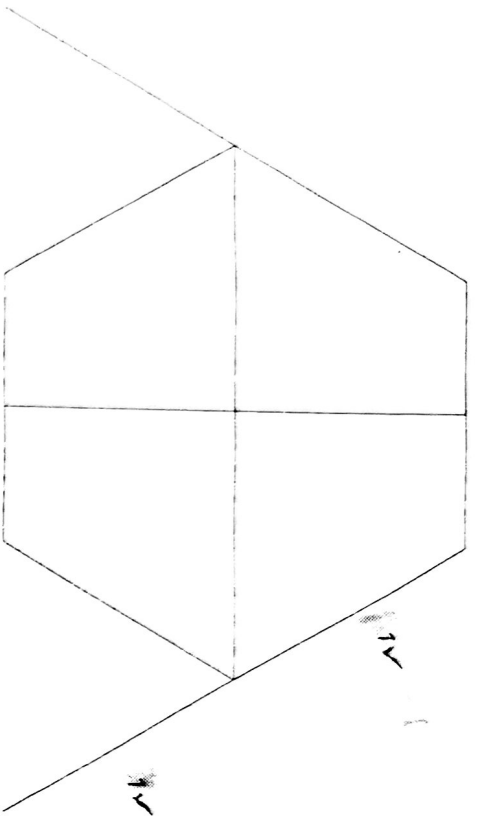
4/12/14	GERT	CHANGE MACHINING SPEC	2
1/12/14	ANDRE	HATCHING DETAIL	1
DATE	CHANGED BY	DESCRIPTION OF REVISION	Nr.

MOUNTING PLATE

EGD ENGINEERING
SCHOEMANSTRAT 207
PRETORIA 0001
www.egdengineering.co.za
012 777 1717

MATERIAL	CAST IRON
DRAWING PROGRAM	TURBOCAD Pro V18
DRAWING Nr.	JPredd - Am1/2
FILE NAME	AM 2,2014
DRAWN ANEMIE	07/12/14
CHECKED HENDRIK	10/12/14
APPROVED JOHAN	13/12/14

SCALE	1:2	SYMBOL	
-------	-----	--------	--



an is

•

Total

Vra:

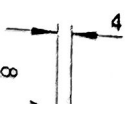
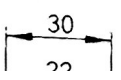
Geg:

•

Instri
Gebra
in 'n i:

•

Totaal:



1-2